



TRACT 6  
±47.1 ac.

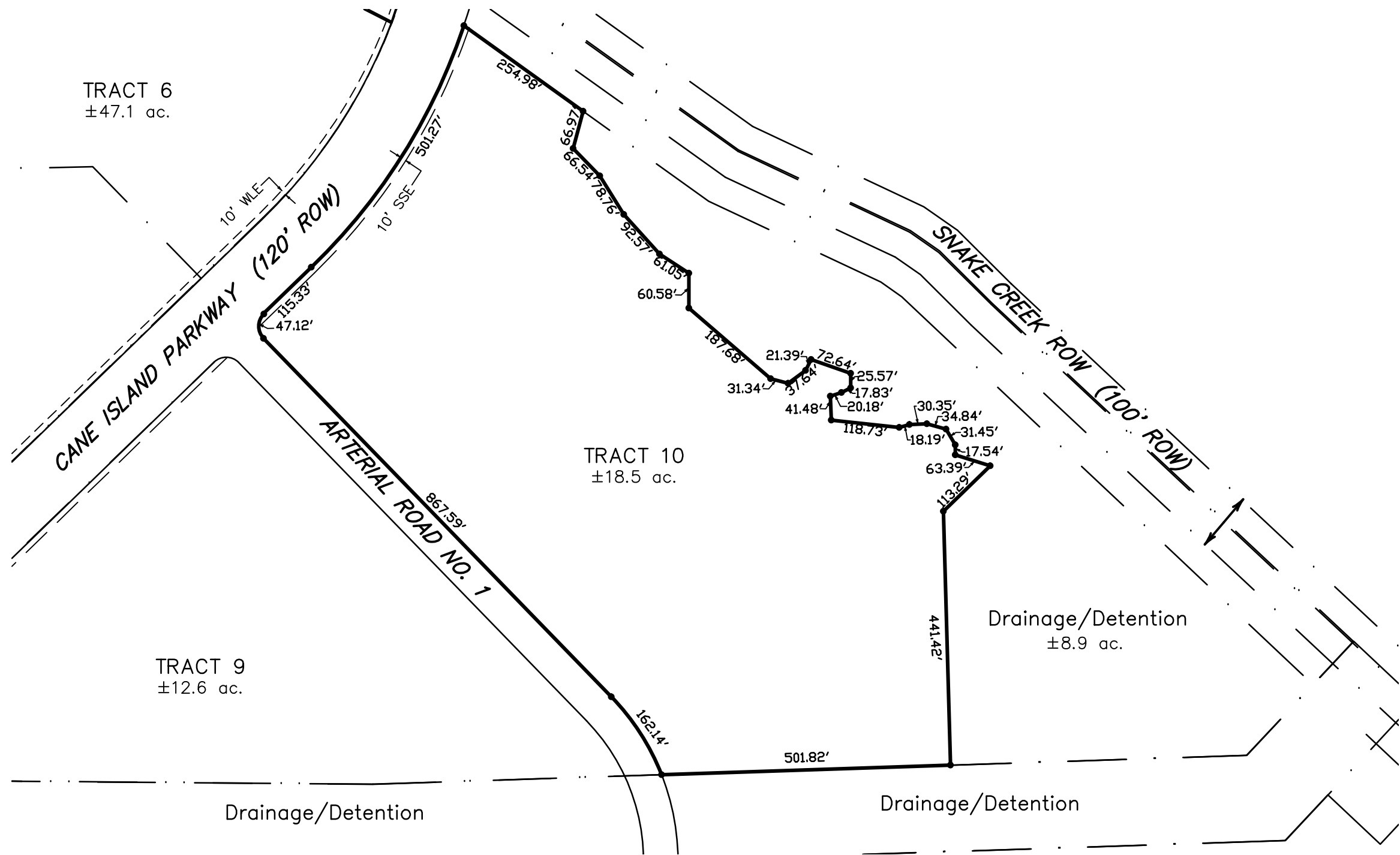
TRACT 10  
±18.5 ac.

TRACT 9  
±12.6 ac.

Drainage/Detention  
±8.9 ac.

Drainage/Detention

Drainage/Detention



**DISCLAIMER:**  
THIS MAP WAS PREPARED WITHOUT THE BENEFIT OF A TITLE REPORT, AND IS INTENDED FOR GENERAL PLANNING AND INFORMATIONAL PURPOSES ONLY. JONES & CARTER, INC. HAS MADE NO INDEPENDENT SEARCH, EXAMINATION, OR ATTEMPT TO ABSTRACT THIS AREA AS TO MATTERS OF RECORD. JONES & CARTER, INC. DOES NOT UNDERTAKE TO IMPLY OR EXPRESS ANY GUARANTEE OR OPINION AS TO THE COMPLETENESS, VALIDITY, OR EFFECT OF ANY OF THE INFORMATION SHOWN HEREON. THIS MAP IS SUBJECT TO FURTHER UPDATE AND REVISION. ALL INDICATED LAND USES ARE SUBJECT TO CHANGE BY THE DEVELOPER AND SHOULD NOT BE RELIED UPON AS ACCURATE BY POTENTIAL PURCHASERS.

**PRELIMINARY LAYOUT**  
FOR  
**WEST TEN BUSINESS PARK**  
**TRACT TEN**  
**JC JONES & CARTER, INC.**  
ENGINEERS • PLANNERS • SURVEYORS  
Texas Board of Professional Engineers Registration No. F-439  
6335 Gulton Dr., Suite 100 Houston, Texas 77081 (713) 777-5337